

Progressive Methods in the Numerical Modeling by the Finite Elements

PAVEL FIALA¹, EVA KADLECOVÁ²

Dept. of Theoretical and Experimental Electrical Engineering
Brno University of Technology
Kolejní 2906/4, 612 00 Brno
CZECH REPUBLIC

Abstract: - This paper presents information about new directions in the modelling of lighting systems, and an overview of methods for the modelling of lighting systems. The new R-FEM method is described, which is a combination of the Radiosity method and the Finite Elements Method. The paper contains modelling results and their verification by experimental measurements and by the Matlab simulation for this R-FEM method.

Key-Words: - Light, lighting systems modelling methods, finite elements methods.

1 Introduction

This paper provides an overview of the Radiosity, Ray-tracing, and Elementary Projection methods, and a new wave of modelling methods used in illumination (the R-FEM method).

In the past, in Lighting Engineering, the elementary projection method and other geometrical optical methods were used for the modelling of illumination. Today, new directions in the modelling of lighting systems are emerging. These new directions start from the Computer Graphics modelling methods and from new methods of numerical modelling used for the solution of technical problems from different industrial sectors. The main applications of the Computer Graphics modelling methods are in architectural engineering and domestic architecture.

2 The Computer Graphics modelling methods

Computer Graphics allows us to use the method of Global illumination in the literature [1] and illustrating the capability of each method dealing with BRDF and its complexity. The goal of global illumination is to generate realistic-looking images of objects and scenes, which may or may not exist in reality, by simulating the way light is transported. The Global illumination method is based on the light transport mechanism in the real world. The light transport mechanism can be expressed in terms of BRDF (Bi-directional Reflectance Distribution Function, for more information see reference [2]) of each element, and the most common and practical way is dividing the BRDF into specular and diffuse components. The Radiosity and Ray-tracing algorithms can be measured in two aspects, namely the

accuracy and efficiency in BRDF simulation, and the rendering speed. We can classify the major solutions as

2.1 The Ray Tracing

Ray tracing is a versatile technique that uses the same model to integrate aspects of light/object interaction that were previously handled by separate ad hoc algorithms - reflections, hidden surface removal and shadows.

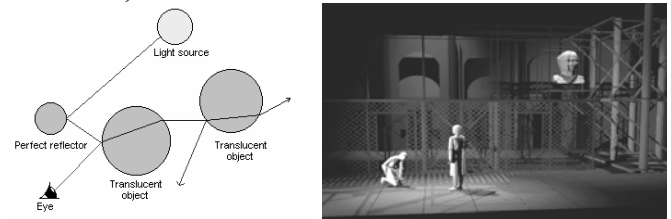


Fig. 1. Principle and design of the ray tracing method

The idea of ray tracing is tracing the light for each pixel, from an eye or viewpoint through the pixel and into the scene. The method of tracing light from a light source and propagating it to an eye or viewpoint is called 'backward ray tracing'.

2.1.1 The Ray Tracing computation

The principle and the design of the ray tracing method is described in Fig. 1. Thus we can modify the local illumination model (at each tree node) by

$$I = I_{local} + K_r \cdot R + K_t \cdot T \quad (1)$$

where R is the intensity of light from the reflected ray, and T is the intensity of light from the transmitted ray. K_r , and K_t are the reflection and transmission coefficients, and I_{local} is the local intensity.

A major disadvantage of ray tracing is that its computation complexity is about the number of objects squared. For more objects on the scene, much more time

is needed for rendering. Some optimal methods are available to enhance the efficiency of ray tracing. These methods are used, for example, in the Radiance software system, which is well suited for the analysis and visualization of lighting in design. More specifications are in the literature [11] and [20].

2.2 The Radiosity

The description of the radiosity model that follows is based on the original radiosity system developed by Goral (for more information, see reference [5]). The radiosity method is based on a simple model of energy transfer. The amount of energy that is reflected off the surface can further be characterized by the product of the amount of energy incident on the surface and the reflectivity constant of the surface.

$$B_j = E_j + \rho_j \sum_{i,j=1}^N B_i F_{i,j} \quad (2)$$

where B_j is the radiosity of surface j , ρ_j is the reflectivity of surface j , H_j is the energy incident on surface j , E_j is the energy emitted by surface j . This equation represents the matrix with two interesting properties: it is diagonally dominant and is therefore guaranteed to converge when using the Gauss-Seidel iteration, and the upper right of the matrix is computable from the lower left [5].



Fig. 2. Principle and design of the radiosity method

Alternative methods for computing the solution of this matrix have been proposed by Cohen et al. [6]. The principle and the design of the radiosity method is described in Fig.2. Follow-up information about radiosity solutions can be found in [4] and [7]. Each of the steps in a radiosity render has been described.

3 The lighting engineering modelling methods

3.1 The EPM method

EPM stands for the Elementary projection modelling method. The EPM method is used most often from all the methods for designing lighting systems in Lighting Engineering. There are, for example, two programs of the PHOTOPA 2.0 design, (Fig. 3. describes the

program execution, for more information see [12]) or LUX JUNIOR (more is in the literature [13]) and HIGH CURVES ST (more is in the literature [14]). The beam of light from the reflector area is considered to be the sum of all beams of light, which went out from the source of light and from the reflection area of the reflector (for more information see [15], [16] and [17]).

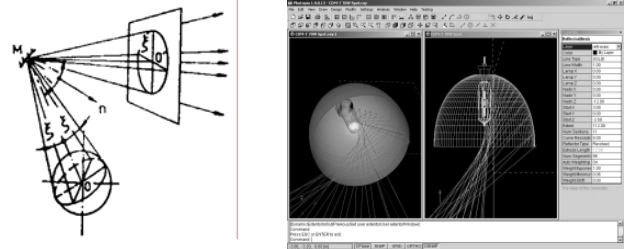


Fig. 3. The principle of EPM and the Photopia 2.0 design

3.2 Matlab simulation

Matlab simulation is the modelling of lighting systems which combines the EPM and ray tracing methods and then approximation by the principle of radiation follows. The algorithm is created by combining the ray tracing method and the EPM method as a geometrical simulation in the Matlab and then the approximation of the light intensity by the principle of radiation is used. It gives the right behaviour of the light intensity distribution. This method was designed for second verification of the lighting systems modeling, which is described in chapter 3.3 of this article. Experimental measurements were used as first verification. The main advantages of the Matlab simulation are the simplicity of the submission for the initial figures and the high speed of the calculations for the simple assignments.

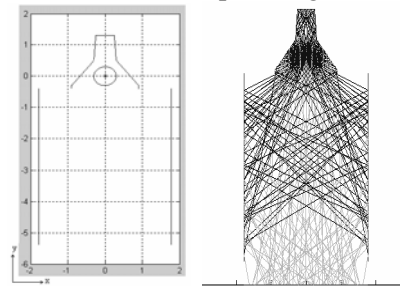


Fig. 4. The geometrical modelling by the Matlab simulation

This modeling is suitable for the verification of the results, which are received from other type of the modeling method.

3.3 The R-FEM method

The R-FEM method is a new direction in the modelling of lighting systems. It utilizes the similarity between physical models. This paragraph demonstrates the usage of analogy between different physical models for the

modelling of light problems. The R-FEM method is able to solve tasks that fulfill the condition $\lambda_S \ll \max(D) \wedge \lambda_S < 10 \cdot \max(D)$, where λ_S is the source of light wavelength and D is one of the geometrical dimensions of the modelling task. It can be used for to model more complicated physical problems than the methods mentioned up to now. An example of a more complicated physical problem, which we can solve by the R-FEM method, is the modelling of light intensity distribution in interior or exterior spaces with non-homogeneous environment, where the light has passed through some impure air (e.g. filled with smoke, fog, mist, vapour, dust, etc.). In technical praxis we often encounter conjugate problems. A necessary part of the design process during the development and measurement of light sources is the modelling and experimental verification of results. The most accurate mathematical models of the sources of light include models based on the radiation principle. One possibility is to use standard one-purpose programs while another possibility offers the usage of sophisticated numerical methods, among them the finite element method, for example the ANSYS program.

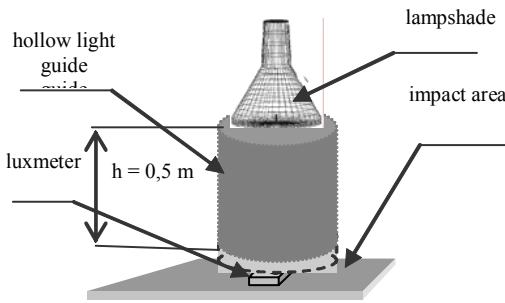


Fig. 5. Geometrical illustration of a hollow light guide

The ANSYS program uses standard program tools such as modelling, discretization into a net of elements, solvers, evaluation, and interpretation of the results. The crux of the whole problem lies in the transformation of thermal field quantities into optical quantities. This can be done using the general rules described in [19]. In the following text the basics of modelling the primitive light problem are described. The verification of the model of light source is done via experiment and then it continues to the hollow light guide problems and it was also verified by experiment (for more information, see references [17] - [19]). The geometrical situation that was modelled and verified is shown in the Fig. 5.

3.3.1 Building the numerical model

The formulation of the basic thermal model is based on the first law of thermodynamics

$$q + \rho \cdot c \cdot v \cdot \text{div}T - \text{div}(k \cdot \text{grad}T) = \rho c \left(\frac{\partial T}{\partial t} \right) \quad (3)$$

where q is the specific heat, ρ is the specific weight, c is the specific solidification heat, T is the temperature, t is the time, k is the coefficient of calorific conduction, v is the the velocity of flow. This model can, with respect to the application of Snell's principles, be simplified into the form

$$q - \text{div}(k \cdot \text{grad}T) = \rho c \left(\frac{\partial T}{\partial t} \right) \quad (4)$$

According to the Stefan-Boltzmann principles, heat transfer by way of radiation between surfaces with relative indexes i, j is formulated as

$$q_{ri} = \sigma \cdot \varepsilon_i \cdot A_{i,j} \cdot S_i (T_i^4 - T_j^4) \quad (5)$$

where q_{ri} is the specific heat transferring from surface with index i , σ is the Stefan-Boltzmann constant, ε_i is the emissivity of surface, $A_{i,j}$ is the projection factor of surface with index i to surface with index j , S_i is the area of surface with index i , T_i, T_j are the temperature of surfaces i, j . The projection factor is determined, it is possible to use the Galerkin principles for converting this problem into model (4). Marginal and initial conditions must be respected.

$$[K] \{T\} = \{Q\} \quad (6)$$

where K is the coefficients matrix, T is the columnar matrix of sought temperatures, Q is the columnar matrix of heat sources. Thermal flow T_f is determined from temperature T . By the radiation principle, the elements of column matrix of heat sources Q . The heating model will be used for the modelling of light problem using the Snell principles in optics. Light source with lighting intensity E (lx) corresponds to equivalent heat quantity density of heat flow q' , light flow Φ (lm) corresponds to equivalent quantity of heat flow q' .

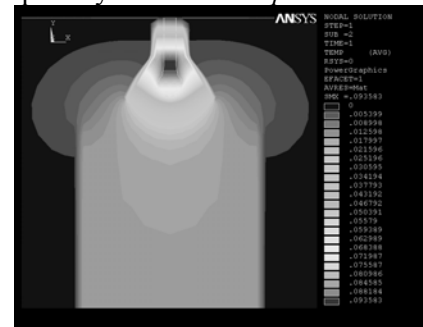


Fig. 6. The result of the R-FEM method for Fig. 5

The resulting light flow is defined by equation:

$$\Phi_e = \frac{T_{f,e}}{S_{n,e}} \quad (7)$$

where Φ_e is the flow of light on the element, $T_{f,e}$ is the equivalent of the thermal flow through the element, $S_{n,e}$ is the normal surface to the element (more can be found in [19]). The result of modelling by the R-FEM method is shown in the Fig. 5.

3.3.2 Verification of the R-FEM

The results of the verification of the R-FEM via experiments are published in the references [17] - [19]. There are differences between the values obtained by modelling and experimental measurement, ranging from 5 – 15 %, depending on the distribution of the net of elements. When the elements of the net are of a lower density, the differences are also lower. This problem requires the net of elements to be optimized.

One of the biggest advantages of this method is the wide spectrum of its usage. We can design the interior and also exterior scenes with its specifications in the materials quality, climatic dissimilarities and geometrical dimension varieties. We can use all types of sources of light with their diversity of the colour distribution in the light spectrum. The designers are not limited by the geometrical dimension varieties, colour distribution in the light spectrum, material qualities or climatic dissimilarities. The other advantage is that the method is very accurate. The degree of accuracy can be chosen by choosing the method of generating nets of elements and the solution algorithm because all this is provided by the ANSYS standard program tools.

3.4 The Full FEM wave solution

FEM is the short form for the Finite Elements Method modelling. The light problems that fulfill the condition $\lambda_s \ll \max(D) \wedge \lambda_s < 10 \cdot \max(D)$, where λ_s is the source of light wavelength and D is one of the geometrical dimensions of the modelling assignment, will be solved by the FEM using the full wave equation, which was used to define light emissions. This method of the solution yields highly accurate results, but is demanding as regards geometrical declaration, and time-consuming (for example, for incoherent sources of light the calculation is too long). The Full FEM wave solution is suitable for a specific purpose.

4 Conclusion

This article describes numerical methods of modelling lighting problems, which are used in Computer Graphics and in Lighting Engineering. It also describes the R-FEM method, which has been verified and found to be a great asset for the modern trends in modelling lighting problems. It can solve specific light problems that up to now have only been solved by using many simplifications. The research described in the paper was financially supported by FRVŠ grant No IS 432169/2003 and by MSM research plan No 00216305XX.

References:

- [1] <http://www.icg.seas.gwu.edu/cs367/global.pdf>
- [2] <http://www-geog.bu.edu/brdf/brdfexpl.html>
- [3] <http://grail.cs.washington.edu/projects/glob-illum/>
- [4] <http://www.cs.wpi.edu/~matt/courses/cs563/talks/radiosity.html>
- [5] Goral, C. M., Torrance, K. E., Greenberg, D. P., Battaile, B. *Modeling the Interaction of Light Between Diffuse Surfaces*, Computer Graphics, vol. 18, no. 3, pp 213-222, 1984.
- [6] Cohen, M. F., Greenberg, D. P., *The Hemi-Cube - a Radiosity Solution for Complex Environments*, Computer Graphics, vol. 19, no. 3, pp 31-40, 1985.
- [7] <http://www.cs.utah.edu/~bes/graphics/radiosity/course-node23.html#sec:links>
- [8] <http://www.cs.wpi.edu/~matt/courses/cs563/talks/ray.html>
- [9] <http://www.siggraph.org/education/materials/HyperGraph/raytrace/radiance/daylight.html#Begin>
- [10] <http://www.ert.rwth-aachen.de/Projekte/grace/raytracing.html#top>
- [11] <http://radsite.lbl.gov/radiance/framew.html>
- [12] http://www.lighting-technologies.com/Products/Photopia/Photopia2_pod.htm
- [13] Raditschova, J., *Direkte Methode der Untersuchung der Kurven der Reflexionsflächen. Konferenz Lux Junior*, Ilmenau, Germany 1995.
- [14] Gašparovský, D., *Higher algebraic and transcendental form curve for light reflector, (Vyššie algebraické a transcendentné tvoriace krivky pre reflektory svitidiel)*, Jemná mechanika a optika, no. 6, pp 191 - 193, The International Society for Optical Engineering: FÚ ČÚAV ČR, 1997.
- [15] Horňák, P., Trembač, V. V., Ajzenberg, J. B. *Lamps and light sources(Svietidlá a svetelné zdroje)*, ALFA, Bratislava, 1983.
- [16] Kadlecová, E., Fiala, P., *Numerical modelling of light problem*, Proceedings of the 5th International Conference ELEKTRO 2004, vol. 2., EDIS, Faculty of Electrical Engineering, University of Žilina, Slovak Republic, pp. 1 - 4, ISBN 80-8070-252-7.
- [17] Kadlecová, E., Bernard, M., Fiala, P. *Illumination of interiors by the Hollow Light Guides*, 14th International Conference Light 2003. Bratislava, Slovak Republic, pp. 84 - 88, ISBN 80-233-0488-7, 2003.
- [18] Kadlecová, E., Fiala, P. *Light guide modeling. Energy Forum 2004*, Technical University - Sofia, Bulgaria, pp. 338 - 341, ISBN 80-986-1619-1, 2004.
- [19] Kadlecová, E., *Automated system of light reflective surface computation (Automatizovaný systém výpočtu odrazné plochy svitidel)*, PhD thesis VUT v Brně, FEKT, Brno, Czech Republic, 2004.
- [20] <http://fuzzyphoton.tripod.com/whatisrt.htm>